



_Nitrogen
_Atomic Number: 7
_Atomic Weight: 14.0067
_Melting Point: 63.15 K (-210.00°C or -346.00°F)
_Boiling Point: 77.35 K (-195.80°C or -320.44°F)

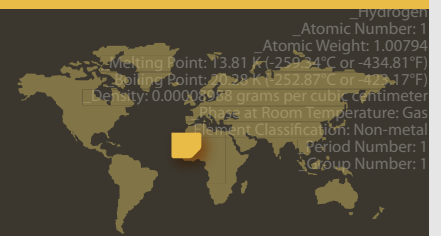
HYDROGEN GENERATOR CFH200 - 600

- ▼ CFH200-600_
- // 99.995%_Purity_
- // 200- 600cc/min_Max_Flow_Rate_

With more than 10 years experience in development and production of laboratory gas generators Peak Scientific has developed close relationships with Instrument Manufacturers and other clients. We have invested time & effort to learn more about your work, the environment you work in and the instruments you operate to conduct your research. The results are not only products which fulfill your needs and wishes, but they have also been tried, tested & approved by the world's leading Instrument Manufacturers, making it the industry's choice.



We are confident that our products will help you concentrate on more important aspects of your work than your gas supply.



The CFH200-600_

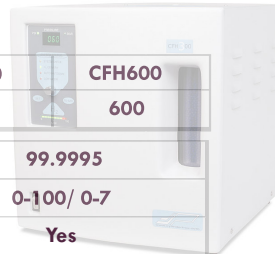
The CFH Range delivers high purity gas with reliability & safety built in to every component. The 'cylinderfree' systems have many unique features, making them the preferred choice of laboratories requiring reliability & quality. Using ION exchange membrane technology originally developed for NASA the generator requires only deionised water (loaded automatically) to produce a constant supply of hydrogen gas.

Features & Benefits

- Experience ▶▶
 _more than 10 years of experience
 in the industry
- Safety ▶▶
 _built inline with Health & Safety
 Standards
- Quality ▶▶
 _High quality Hydrogen at 100 psi
 outlet pressure
- Convenient ▶▶
 _24/7 uptime, if required
 _Accurate Analysis
 _No health hazards
 _Automatic Water Loading Pump

Technical Specifications Hydrogen Gas_

	CFH200	CFH300	CFH600
Max Flow Rate (cc/min ATP)	200	300	600
Purity (%)	99.9995		
Delivery Pressure (psi/bar)	0-100/ 0-7		
Gas Flow Indicator	Yes		
Dual Pressure Safety	Yes		
System Check	Yes		
Leak Detection	Yes		
Water Purity Req'd (Conductivity/Resistivity)	<1.0 uS/cm/>1.0M Ohm-cm		
Outlet Port	1/8" OD tube		
Electrical Requirements	230v/50Hz vA300 115v/60Hz vA300		
Dimensions (cms/ ins)	38.5x35x39 15x14x15		
Weight (kg/ lbs)	22 / 48.5		



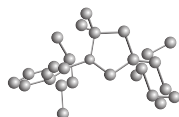
//The safer solution to your total gas requirements_

<http://www.peakscientific.com>
info@peakscientific.com

© 2006



THE QUEEN'S AWARDS
FOR ENTERPRISE
2004



Copyright 2006 Peak Scientific

Last Rev.: 22/02/2006

UK Headoffice
 Peak Scientific Instruments
 Fountain Crescent
 Inchinnan Business Park
 Inchinnan, Renfrewshire
 PA4 9RE
 Scotland, UK
 Tel.: +44 (0)141 812 8100
 Fax: +44 (0)141 812 8200

US Office
 Peak Scientific Instruments
 5 Alfred Circle
 Bedford, MA
 01730-2346
 USA
 Tel.: +1 866 647 1649
 Fax: +1 866 732 5427